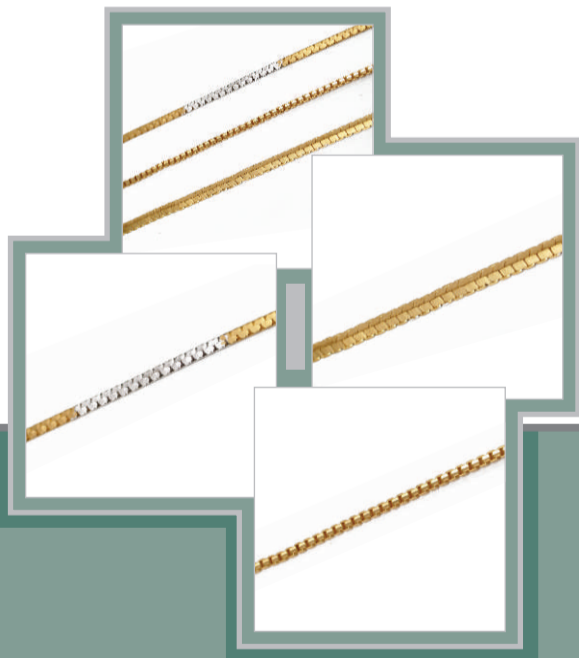




Solanki Mechanic Works

Precision Jewellery Machines

**Double Head Diamond
Faceting Machine for
Square & Rectangular Chains**



Solanki Mechanic Works

40-W, Bhaktinagar
Udhyognagar, G. I. D. C. Ind. Estate
Rajkot 360 002 (Gujarat) India
Phone: 91 281 2362189 | 2373847
Fax: 91 281 2376386
E-mail: info@soliyo.com
Web: www.soliyo.com



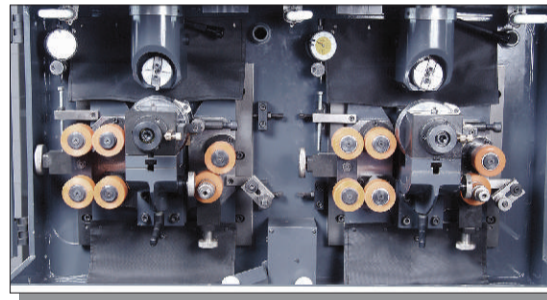
Solanki Mechanic Works

Conventional Faceting Machine

Double Head Diamond Faceting Machine for Square & Rectangular Chains

Specification

- Double head diamond cutting machine.
- The machine is equipped with Ac motors and Ac drives to ensure life long maintenance free working.
- The machine is equipped with high speed spindle capable of generating 23000 rpm.
- All the machine components are machined on precision CNC machines and are hardened and grounded. These components are individually inspected for accuracies. The machine is assembled in a controlled environment.
- Customized horizontal head fitment is also possible on this machine.



Technical Data

Dimensions	90 cm X 70 cmX 160 cm (LX B X H)
Weight	750 kgs
Input Power	415 Voltage (3 Phase + Neutral) 2 KW

Note: All rights of modifications reserved.